

**THE  
GLASSELL  
SCHOOL  
OF ART  
STUDIO  
SCHOOL**

[mfah.org/studioschool](https://mfah.org/studioschool)



FALL 2020  
COURSE CATALOG

#### Physical Address

*(Do not mail registrations to this address.)*

5101 Montrose Blvd.  
Houston, Texas 77006

#### Mailing Address

Glassell School of Art  
P.O. Box 6826  
Houston, Texas 77265-6826

#### For general information

[glassell@mfah.org](mailto:glassell@mfah.org)

#### Send registration forms to

[registration@mfah.org](mailto:registration@mfah.org)

#### Phone

713-639-7500

Cover: From the *Glassell Student Exhibition, 2019*: Jong D'Andrea, *Story 3*, 2019, mixed-media sculpture.  
Photo by Sarah Hobson.

Photos, inside: Jenny Anthill, Trish Badger, Cameron Bertuzzi, Sarah Hobson, Allyson Huntsman, and staff.

## WELCOME

As we negotiate these uncertain times, creative expression and engagement with culture are among the most significant tools for understanding our relationship to the moment. We paint, sculpt, draw, and express ourselves in different media to find our voices and add our songs to the collection of individual voices. We study art history to comprehend how humans have expressed joy, love, and hope, as well as pain and uncertainty, in previous eras.

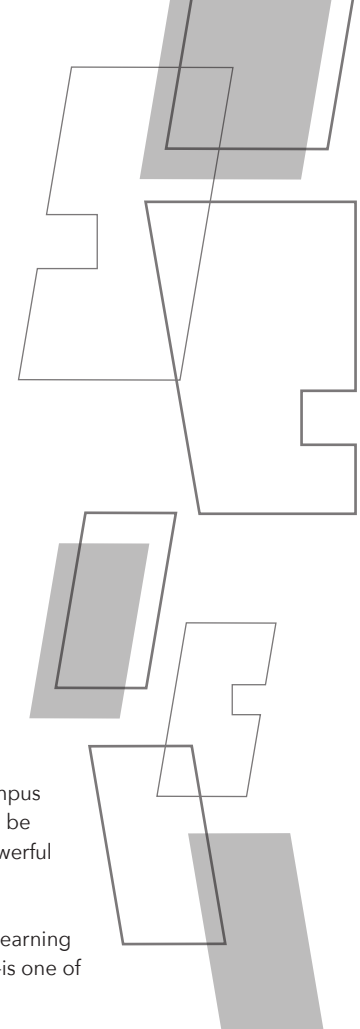
Our class offerings for the fall semester reflect the usual breadth of our 2-D, 3-D, and art history programs. The outbreak of COVID-19 has led us to take extra precautions to keep facilities sanitized for meeting on campus. Some classes provide the option to participate either online or in person on campus, and some classes will be conducted completely online.

This fall we anticipate the completion of the new Nancy and Rich Kinder Building, which will showcase modern and contemporary art from the vast collections of the Museum of Fine Arts, Houston. The building's opening completes the campus expansion project, and its proximity to the Glassell School will be a wonderful asset for our students, providing examples of powerful work that will influence and delight our community.

We look forward to seeing students back in our building or learning remotely. Art—whether making, teaching, or experiencing it—is one of the great joys in life. We hope to share this joy with you.

#### Joseph Havel

**Director, The Glassell School of Art  
The Museum of Fine Arts, Houston**



## Contents

- 4 General Information
- 4 Admissions
- 6 Tuition and Fees
- 7 Payment and Refund Policy
- 8 Tuition Discounts
- 8 Grading Information
- 9 Student Policies & Information
- 12 Programs of Note
- 14 Course Descriptions
- 31 Class Schedule
- 36 Student Events
- 37 Online Art History Course Registration Form
- 39 Faculty and Staff
- 45 Annual Fund Drive

## Academic Calendar

### July 6

Fall preregistration open to *spring & summer 2020 students*

### August 11

10:00 a.m.–5:00 p.m.  
Registration and counseling for *new and continuing students*  
(Call 713-639-7500 for appointment.)

### August 17

Last day to drop studio and art history courses and receive a refund (minus \$100 processing fee). Last day enrolled students can change class schedules.

### August 24

Fall semester begins

### September 7

Labor Day holiday, *no classes*

### October 12-13

Fall semester break, *no classes*

### October 19

Scholarship portfolios due for spring 2021

### November 16

Preregistration open to *current students* for spring 2021 semester

### November 25-29

Thanksgiving break, *no classes*

### December 7

Fall semester ends



## GENERAL INFORMATION

Originally founded as the Museum School in the late 1920s, as part of the Museum of Fine Arts, Houston, the Glassell School of Art has grown for almost 100 years, through several buildings, to a dynamic and diverse program today, encompassing classes for students of all ages. Named for Houston businessman and arts patron Alfred C. Glassell, Jr., the school offers programs and classes in all media areas, and for all skill and experience levels.

The school's new building, designed by Steven Holl Architects and opened in 2018, provides more than 80,000 square feet of classroom and exhibition space. With 22 classrooms, an 80-seat auditorium, and year-round programming for children and adults, the Glassell School of Art serves more than 7,000 students per year, offering a wide range of studio, lecture, and workshop programming for students at all ages and skill levels.

## GENERAL POLICIES

The Glassell School of Art is part of the Museum of Fine Arts, Houston (MFAH), and as such, complies with all policies and procedures of the MFAH, as appropriate, for the proper administration and management of the school. The school reserves the right to amend, add, and delete policies and regulations as necessary, as well as the right to change programs, dates, personnel, and fees noted in this catalog. Any photos, videos, pictorial images, voice recordings, or quotations taken or created by the MFAH (including, without limitation, any taken by any photographer or videographer paid by or volunteering for the MFAH) during or relating to a course are the sole property of the MFAH. These items may be used in future publications, web pages, promotions, advertisements, and

exhibitions of the school or the MFAH or any other person authorized to use such images by the school or MFAH without the need of additional permission from or consideration to the student.

## ADMISSIONS

The Studio School offers art history courses, studio courses, and workshops for adults. Students must be at least 18 years of age to attend any studio courses or workshops. Students younger than 18 may enroll in courses (offered during the fall and spring semesters) with the permission of their legal guardian and the course instructor. Questions regarding permission may be directed to the dean. New students must attend mandatory faculty counseling for placement in courses. Continuing students may only advance if they have successfully completed courses with grades of C or higher, and with the permission and approval of an instructor in their area of study. Students may not repeat courses without faculty approval.

Students enrolled in the Studio School courses are expected to actively participate in their courses and to work toward the improved development of their artistic practices. Students at advanced levels looking to work independently must have faculty approval for their projects and be registered for either advanced-level courses or independent study. The school uses English as the medium of instruction, and all students are assumed to have proficiency in English, particularly with regard to understanding statements and instructions about safety and equipment operation.

Students enrolled in online courses will not be permitted to attend in-person classes due to limitations regarding social distancing. Online students will be permitted to use the studios outside of class times if social distancing is maintained and

will be required to have their temperature scanned when entering the building. All students are required to wear a face mask while in the building and studios.

Due to class-size limitations, the Studio School does not allow enrollment solely for the use of equipment and facilities, nor offer rental of studio time, equipment, or facilities for working artists. Students may be asked to leave the program or not be approved for reenrollment if they are solely enrolled to use equipment and facilities.

## PREREQUISITES AND REGISTRATION

Registrations are not accepted by phone. Undersubscribed sections are canceled at the discretion of the Glassell School.

Art history courses and most workshops do not have any prerequisites, unless specifically noted in description. Students may register for art history courses and workshops by mail or by email. Use the form on page 37 or go to [mfah.org/glassell](http://mfah.org/glassell) to download a form.

New students are welcome to enroll in any course or workshop that does not require prerequisites. New students wishing to enroll in upper-level courses must register in person in order to attend mandatory faculty counseling. Please contact the school via email at [glassell@mfah.org](mailto:glassell@mfah.org) or by phone at 713-639-7500 to set up a counseling appointment. Continuing students may register by mail or by email to [registration@mfah.org](mailto:registration@mfah.org).

Students may skip prerequisite courses only if their student file contains one of the following: 1) documentation that the prerequisite was waived by a faculty counselor or 2) a transcript showing that the prerequisite was completed at another institution. Students must repeat any

prerequisite courses in which they received grades of **W**, **DR**, or **F**.

Each level of a studio course consists of two semesters. Students are expected to enroll in each semester in numerical sequence without skipping semesters, unless the student's record file contains either 1) a transcript showing completion of similar course work at another institution or 2) faculty approval. Additionally, students are expected to progress through the levels at a reasonable rate of study. Students may repeat levels only with faculty approval.

Students are required to have their temperature scanned when entering the building. Face masks or coverings must be worn while inside the building and in the classrooms. By registering for a class, the student is committing to wear a mask at all times in the school building and to follow all current or future safety measures.

## FACULTY COUNSELING AND PLACEMENT

Faculty counseling is held prior to the start of each semester to place students into courses commensurate with their experience and skills. The counseling sessions allow each student to discuss goals with a faculty member, who also evaluates the student's experience based on a review of a portfolio, Glassell School of Art academic records, or a transcript from another institution.

## TRANSFER CREDIT

Students wishing to transfer credits from other institutions must submit official transcripts and a portfolio for review. Portfolios should be submitted during registration to be reviewed during faculty counseling. Official transcripts must be provided no later than one month after the end of the semester's registration period. Students who do not furnish transcripts by this deadline may be dropped from all classes with no tuition refund. Transfer credit

will be evaluated on a case-by-case basis by a faculty counselor, in conjunction with the registrar's review of the student's transcript.

## INTERNATIONAL STUDENTS

The Glassell School is not able to grant visas to international students seeking to study studio arts. If looking to enroll in a visa-based program, we recommend registering through our partner program with the University of St. Thomas.

## ONLINE STUDENTS

Students have the option to enroll in many of the courses online. Students who choose to enroll in an online course will pay the amount noted in the Tuition and Fees section under Online Studio Courses and Online Art History Courses. Students enrolled in a course online will not be permitted to attend the same class in person if the course is offered both online and in person. Students in online courses are able to use the studios outside of class time, as social distancing permits, and are required to wear a face mask as well as have their temperature scanned upon entering the building.

Parking is not provided for online students, and those wishing to use the studios will be required to pay the posted parking rates.

## TUITION AND FEES

The Glassell School of Art does not offer payment plans. All tuition and fees are due in full at the time of registration. Workshops are priced individually.

Tuition covers the cost of the class and parking. Class fees are charged separately, and include scaled fees for appropriate use and maintenance of equipment in all studios, purchase of bulk supplies (chemicals, glazes, and inks) in various areas, disposal of hazardous waste, and usage of figure models in scheduled classes and figure drawing lab sessions. Tuition rates are listed

below for courses in various areas and reflect the appropriate scaled fee for use of school-provided resources.

Tuition for online courses covers the cost of the class only. Students enrolled in online courses will not be provided parking, and are expected to pay the posted amount if they choose to use the studios at the school outside of the class times.

Personal supplies such as paints, canvas, brushes, clay, tools, photographic paper, lenses, cameras, and other materials are not included in these fees, and it is expected that students will provide these materials for themselves. Supply lists are provided by instructors at the first class meeting.

### Tuition for Full-Time Students

Students enrolling in a full-time schedule (4 courses per semester) are eligible for a 20% discount off their total cost of tuition (class fees included).

### Tuition

Studio Courses (3 hours)  
\$700 tuition, plus \$25 fee: **\$725 each**

2-D Design  
3-D Design  
Collage & Assemblage  
Color  
Critique  
Drawing  
Drawing Fundamentals  
Painting  
Seminar  
Watercolor

Studio Courses (3 hours)  
\$700 tuition, plus \$100 fee: **\$800 each**

Ceramics  
Digital Photography  
Digital Sculpture  
Enameling  
Foundry  
Jewelry

Life Drawing  
Life Painting  
Photography  
Printmaking/Monoprint  
Sculpture

Art History Courses (2 hours)  
\$500 tuition, no fee: **\$500 each**

Online Studio Courses (3 hours)  
\$600 tuition, no fee: **\$600 each**

Online Art History Courses (2 hours)  
\$380 tuition, no fee: **\$380 each**

## PAYMENT AND REFUND POLICY

The school requires a minimum number of students in order to hold a class. Students enrolled in classes that are canceled because of low enrollment will be notified by the registrar prior to the start of the semester and given an opportunity to enroll in another class or receive a full 100% refund or credit.

### Add/Drop Policy

Any student submitting more than one (1) add/drop form per semester will be charged a processing fee of \$50 for each additional form submitted.

Students wishing to add a course or workshop must complete an add/drop form, available at [mfah.org/glassell](http://mfah.org/glassell) and in the administrative office. All courses are considered closed after the first class meeting, and permission of the instructor is required to add into a course. Additional tuition charges and refunds are processed as appropriate.

Students wishing to drop a class must complete an add/drop form. **All registrations are considered final as of the stated drop date in the calendar (see page 2). No refunds or credits are available for students who drop after that date.** If applicable, refunds will be processed for the full amount

of tuition, minus a \$100 processing fee. Refunds are processed through the MFAH accounting department and, in most cases, are processed through the original method of payment. Refunds by check are sent via U.S. mail and may take up to three (3) weeks to process. Credit card refunds may take up to a full statement cycle to appear.

Students wishing to drop a workshop and receive a refund must submit a drop form one (1) week prior to the start of the workshop. Refunds will be processed for the full amount of the workshop costs, minus a \$50 processing fee.

The school does not offer prorated refunds or credits for individual sessions of courses or workshops that are canceled for reasons beyond the school's control, such as weather or unexpected absence of the instructor.

### Medical Drop Policy

In the case of serious illness or injury necessitating the student's withdrawal from the school, it is the responsibility of the student to notify the registrar immediately.

**Requests will only be honored if the student submits documentation from his/her physician that a withdrawal from the course is medically necessary. A tuition credit will be issued for the student to take the course in a future semester.**

The registrar will process the student out as appropriate, including initiating any credit, and notify the student's instructor(s). Instructors cannot initiate or complete the withdrawal process on behalf of a student, nor initiate any refund or credit processes.

### Credits

Once issued, credits for dropped courses or workshops cannot be exchanged for a monetary refund. Credits remain on file for two (2) semesters before expiring. Credits are filed in the dollar amount originally paid, not as placement in a particular course or workshop. If a student uses a credit on file,

and later drops the course, the student forfeits that credit. It does not remain on file, nor does it roll into the next semester. Students using a credit would need to complete all appropriate enrollment forms, obtain necessary approvals, and indicate that they are using a credit on file for payment purposes.

## SCHOLARSHIPS, FINANCIAL AID, AND DISCOUNTS

The school does not offer any need-based financial aid, nor is the school eligible to participate in federal financial-aid programs.

### Studio School Scholarships

A limited number of scholarships are available each fall and spring semester for both studio and art history courses. These merit-based scholarships are awarded through a portfolio review by a panel of Studio School faculty. Scholarships are funded through proceeds from the Annual Student Sale as well as privately funded grants. Scholarships are available to students at all levels but are awarded solely based on the quality of the artwork submitted through portfolios. For more information on applying for the merit-based scholarships, visit [mfah.org/studioschool](http://mfah.org/studioschool) or call 713-639-7500.

### TUITION DISCOUNTS

All discounts are applicable to tuition only, and not to class fees. Class fees are added to the transaction after discounts have been applied. Discounts may not be combined, and are not issued retroactively. Discounts are not applicable on Glassell study-tours courses, BLOCK courses, or any courses and workshops involving travel.

### MFAH MEMBERS

Museum members at the Patron level (\$200 annual membership fee) and above are eligible for a 5% discount off tuition

only. Please note that studio class fees of either \$25 or \$100 are not tuition and therefore are not discounted. Discount is valid for studio course tuition (\$700), art history course tuition (\$500), online course tuition (\$600/\$380), and/or workshops (pricing will vary).

### MFAH Docents

Currently active MFAH docents (including docents at Bayou Bend and Rienzi) are eligible for a 20% discount on all courses and workshops for the semester (including class fees). Docents must present a docent ID with the registration form.

### MFAH Staff

Current MFAH staff are eligible for a 30% discount off tuition only. Please note that studio class fees of either \$25 or \$100 are not tuition and therefore are not discounted. Discount is valid for studio course tuition (\$700), art history course tuition (\$500), online course tuition (\$600/\$380), and/or workshops (pricing will vary). Staff must present a staff ID with the registration form.

## GRADING INFORMATION

Grades are issued at the end of each semester and are mailed to each student. A student may elect to receive a letter grade or a Pass/Fail (P/F). Students who have chosen Pass/Fail (P/F) grades may petition for letter grades within two years of taking the course. After two years, grades cannot be changed. *\*Note: Students enrolled through UST must take all classes for letter grades and may not select the Pass/Fail option.*

### Letter Grades

Letter grades range from **A** to **F**: **A** (Excellent), **B** (Good), **C** (Average), **D** (Below Average), and **F** (Fail). Pluses and minuses may be used with letter grades, with the highest grade given being **A**.

### Incomplete

A notation of **I** (Incomplete) is given if the student is unable to complete the assignments of the course for reasons beyond the student's control, including illness. The student must notify the instructor and receive approval to obtain an incomplete. An incomplete must be resolved prior to the start date of the following semester or it becomes an **F** grade.

### Withdrawal

To withdraw from a class, a student must complete the add/drop form and notify the registrar. The student will receive a **W** (Withdrawn) on his/her transcript. **No refunds or credits are issued.**

### Workshops

Students enrolled in workshops will receive grades of **S** (Satisfactory) or **U** (Unsatisfactory). Satisfactory completion of workshops earns one elective credit hour. Workshop credit hours do not apply toward the Certificate of Achievement program.

## STUDENT POLICIES & INFORMATION

### Attendance

Each student is permitted three (3) absences per semester. Four (4) or more absences may result in dismissal or a grade of **F** (Fail) if the student fails to complete assignments that were scheduled during the absence(s). Registered students who fail to attend any classes in a given semester will receive a **W** (Withdrawn) on their transcript. Instructors reserve the right to drop a student who has been absent from the first two (2) class meetings. In this case, refunds and/or credits will not be issued and the student will receive a **W** on their transcript.

### Building Hours/Classroom Access

The Glassell School of Art is open Monday through Friday from 9:00 a.m. to 10:00 p.m., on Saturdays from 9:00 a.m. to 7:00 p.m.,

and Sundays from 10:00 a.m. to 7:00 p.m. during the scheduled semester programs. Hours may be adjusted for holidays or private events. It is recommended to check the website and social media for information on closures related to holidays and private events. The school makes all efforts to provide advance notice of event closures, including notices on social media and via email.

During the semester, currently enrolled students may expect to access their classrooms during building hours only. Students do not have permission to access studios and facilities outside of the building's hours, nor permission to access areas in which they are not enrolled.

Students who attend classes or wish to work in the studios during open studio times will be required to wear a face mask or covering and to check in with the guards to have their temperature scanned. The number of visitors, staff, and students to the Glassell School are limited at this time, and students may not be given access to the studios if social distancing cannot be maintained. Students are asked to monitor themselves in regard to social distancing and sickness, and are expected to consider the health of themselves and others before entering the building and studios.

During the breaks between semesters, students may access studios only if preregistered for the next semester. Studio access during breaks is not guaranteed, as that time is used for maintenance, cleaning, and equipment upgrades.

Please note: The MFAH Garage hours are different from the building's hours, and garage access does not guarantee or include classroom access. See **Parking** for more information.

### **Discipline/Dismissal**

The Glassell School reserves the right to remove students from classes for unsatisfactory achievement, excessive absences, or behavior that is deemed to be rude, disruptive, inappropriate, dangerous, or in violation of school health and safety regulations, or in violation of Museum policies.

While it is impossible to compile a complete list of disruptive behavior, any form of conduct by an individual or group of students that interferes with or inhibits the educational opportunities of another student is considered a disruption. Similarly, conduct that diminishes the effectiveness of an instructor or has the effect of negatively impacting the learning environment is also considered a disruption. Students engaging in disruptive classroom behavior may be subject to disciplinary action, including warnings, dismissal from a class, and dismissal from the program and/or school.

Individual instructors maintain the right to dismiss a student from a class with a warning and to remove a student permanently from a class for repeated offenses. In the event of subsequent behavior problems, the student will be dismissed with no refund and no access to further programming.

Students may also be dismissed for inappropriate and disruptive behavior toward Museum staff, for nonpayment of any tuition and fees past or present, and for unlawful possession or use of drugs and/or alcohol.

### **Free Museum Admission**

The Museum of Fine Arts, Houston, is the largest art museum in the Southwest, and its encyclopedic collections are an exceptional resource for learning about the visual arts from a worldwide perspective. Studio School students receive free general

admission to the Museum (excluding ticketed exhibitions and events).

### **Homework**

Each studio course requires a minimum of three hours of homework per week. Students enrolled through the University of St. Thomas are expected to produce three hours of additional homework per course to fulfill the credit-hour requirements.

### **Participation**

Students are expected to actively participate in their classes, including attending scheduled critique sessions and field trips.

### **Lockers**

A limited number of lockers are available in specific classes and designated areas for student use during the registered semester. The school does not guarantee a locker for each student, nor have the availability to allow students to have multiple lockers in various areas. At registration, the student releases and discharges the school and the MFAH from any liability or claim of liability for any damage to or loss of personal property, including artwork. (Instructors will provide additional information about lockers during course introductions.)

### **Personal Property**

All artwork and personal property left at the school between semesters or after the stated retrieval dates will be discarded. This includes artwork from exhibitions both at the school and other venues, as well as work left in the classrooms and studios. The school will contact students via email with final notice for artwork and personal property pickup each semester. After the deadline date, the school will dispose of any unclaimed items. The school, the MFAH, and their agents or designees are not liable for damage to or loss of personal property left unattended.

### **Parking**

Parking for classes and workshops is included in tuition for in-person classes only. Parking is available in the MFAH Montrose Garage (located directly under the Glassell School of Art). Enrolled students will receive a parking pass to attend weekly class meetings. Additional parking will be provided for scheduled lab or open-studio sessions. Further parking will be at the student's own expense and at the posted rates for the MFAH Montrose Garage. The school does not sell additional parking passes, extend parking passes past the end-of-semester expiration date listed on the pass, nor provide validated parking. Students enrolled in online courses will not receive free parking, and are expected to pay for their parking per the posted rates if/when they come to the school. The school, the MFAH, and their agents or designees are not liable for damage or loss to vehicles or the contents of vehicles parked in or around designated areas.

### **Release of Information**

The school maintains records for all current and past students. Student information is released only to the student or designated representative. Designation forms are available at [mfah.org/glassell](http://mfah.org/glassell) and from the registrar and must be on file for information to be released to anyone other than the student. Exceptions may be made for health and safety emergencies or to comply with legally issued subpoenas.

### **Safety**

The school is committed to the safety of its students, faculty, and staff. As such, the school has prepared a Health and Safety Manual. This document is available from the administrative offices, and a copy is kept in all studios and classrooms. Students are expected to follow safety procedures as outlined in the manual as well as comply with any safety information distributed by

instructors. Students are required to check in with the MFAH guards upon entering the building to have their temperature scanned. Entry points and visitors to the building will be limited. Students whose temperature is above the safe level will not be granted access to the building and will be asked to leave. Face masks or face coverings are mandatory in the building and in the classrooms. Students who enter the building without a face mask will be asked to leave. The building will be cleaned and sanitized more frequently to ensure the safety of our students and instructors. Students and instructors are advised to stay home in the case of illness, and to report to the office any illnesses that could be spread to other students or instructors so that it can be dealt with accordingly. The number of students in the classrooms has been limited to ensure that social distancing can be maintained. Students are granted access to the studios during the open studio times only when social distancing can be maintained. Online classes have been put in place to offset the number of students in the classrooms, as well as to provide education to those students who do not feel comfortable entering the building. Students who fail to follow safety instructions may be dismissed from the school, as outlined in the discipline policy.

### **Student ID Cards**

Each semester, students will receive a Glassell student ID card for the current semester. The Glassell student ID card should be kept with students at all times when in the building. The student ID card should be used at the MFAH guest services desks to access free Museum admission.

### **Transcripts**

Students requesting transcripts must submit a written request and appropriate payment to the registrar. Transcripts cost \$5 per copy. Request forms are available at [mfah.org/glassell](http://mfah.org/glassell) and from the registrar.

Transcript requests will not be processed if the student owes any fees. Students may also mail a request in writing to:

Registrar, Studio School  
MFAH Glassell School of Art, P. O. Box 6826  
Houston, TX 77265-6826

Requests must include the full name of the student, last semester attended, and the full mailing address with zip code for the location(s) where the transcripts are to be sent. Alternatively, the student may pick up transcripts in person. In-person pick-up requests must include a telephone number so that the registrar can contact the student when the transcripts are available. Allow at least 3 business days for transcripts to be completed.

## PROGRAMS OF NOTE

### Certificate of Achievement

A comprehensive fine arts program has been developed in which students work toward a Certificate of Achievement in one of the following subjects: drawing, painting, photography, printmaking, sculpture, ceramics, or jewelry.

A student may begin this program at any point. The program provides students with the necessary foundation for continued studies at an intermediate or advanced level in their major field. A wide range of course offerings for elective credits supplements the major field of study.

Upon the student's satisfactory completion of 96 specific credits, the student's work is reviewed and approved by a certificate committee made up of Studio School faculty.

### Certificate of Achievement Requirements

Students earn three hours of credit for each successfully completed (grade **C** or above) course per semester.

Certificate students are required to receive a letter grade. Pass/Fail grades received prior to fall 2008 will still be accepted toward certificate credits. Workshops are not eligible for credit toward the Certificate of Achievement.

<b>Subject/Course</b>	<b>Credits</b>
Art history electives	12
2-D Design <i>2DD 1303</i> & 3-D Design <i>3DD 1304</i>	6
Drawing Fundamentals <i>DRF 1301, DRF 1302</i>	6
Life Drawing <i>DRL 2310, DRL 2311</i>	6
Major field of study	24
2-D courses (other than major)	9
3-D courses (other than major)	9
General electives	24
<b>Total</b>	<b>96</b>

Students may transfer 12 foundation-level credits, 6 art history credits, and 6 life drawing credits from another post-secondary institution, with the approval of the dean and the registrar. Students interested in the Certificate of Achievement program should call 713-639-7500 to schedule an appointment with the dean.

### University of St. Thomas

The Glassell School of Art serves as the studio arts program for the University of St. Thomas. Students seeking to earn their bachelor of arts degree must apply and enroll through the University of St. Thomas, in order to receive full credit toward degree programs.

Students enrolling through the UST program may only enroll in those courses offered through the UST registration system. Please note, due to UST policies and rules, not all Glassell courses are offered and available for UST enrollment. For more information, please visit the UST website at [stthom.edu](http://stthom.edu).



**ART HISTORY**

**Art History Survey I: Caveman to Medieval**

ARH 307

One of two art history survey courses, this course explores the development of Western art from prehistory to the 14th century. The class is structured chronologically and is designed to encourage a critical understanding of the meaning and function of selected art objects, architecture, and design artifacts within their original historical contexts. Emphasis is placed on a visual and verbal examination and analysis, as well as discussion of societal and historical contexts of all the major stylistic and thematic trends in Western artistic tradition. Slide presentations and case studies of individual museum objects are incorporated in the survey. Online courses will be taught via the BlueJeans video conferencing app, with handouts available on Google Drive. Students will be able to interact with the instructor during class time over the BlueJeans conferencing app's chat function.

**Art History: Pablo Picasso and His Artistic Legacy**

ARH 320

This course offers a unique opportunity to survey the works of Pablo Picasso (1881-1973), the most prolific and influential artist of the first half of the 20th century. Nearly seven decades of incessant art making will be examined in relation to major currents and themes in European art, history, and culture. Emphasis is not only on stylistic developments during the artist's lifetime and artistic career, but also on the way Picasso interacted with the ideas and values of his culture and time. The aim of the course is to increase visual literacy and to deepen students' awareness of the cultural and conceptual framework in which Picasso's artwork was made and used. This course will highlight current scholarship and conversations in order to reassess

Picasso's unique vision and his legacy to the art world. Class sessions are primarily lecture with some discussion. Slide presentations and case studies of individual artwork are incorporated in the course. Online courses will be taught via the BlueJeans video conferencing app, with handouts available on Google Drive. Students will be able to interact with the instructor during class time over the BlueJeans conferencing app's chat function.

**Art History: Modern & Contemporary Art at the MFAH**

ARH 310

Using the new buildings and campus redevelopment of the Museum of Fine Arts, Houston, as a point of departure, and to celebrate the opening of the new Nancy and Rich Kinder Building for modern and contemporary art at the MFAH, this course introduces students to the history of art from the 1870s through the present day. The course is designed to encourage a critical understanding of the meaning and function of selected art objects and design artifacts within their original historical contexts and within the museum context. Emphasis is placed on visual and verbal examination and analysis, as well as discussion of societal and historical contexts of all the major stylistic and thematic trends in modern and contemporary art. Course topics are related to the collections on view, but recurring questions will focus on materiality and display. Online courses will be taught via the BlueJeans video conferencing app, with handouts available on Google Drive. Students will be able to interact with the instructor during class time over the BlueJeans conferencing app's chat function.

**Art History: Women in Art**

ARH 312

In this course, students study women artists from the 19th century until the present

day. Emphasis will include not only stylistic developments, but also the ways women artists interacted with the ideas and values of their time and cultures. Students study and interpret works by Angelica Kauffmann, Rosa Bonheur, Berthe Morisot, Mary Cassatt, Camille Claudel, Georgia O'Keeffe, Frida Kahlo, Louise Bourgeois, Marina Abramović, Judy Chicago, Kara Walker, Cindy Sherman, and Sophie Calle, and examine the cultural and artistic contexts of these works. The artists' relationships to the society that produced them will be examined, as well as feminism and gender. Online courses will be taught via the BlueJeans video conferencing app, with handouts available on Google Drive. Students will be able to interact with the instructor during class time over the BlueJeans conferencing app's chat function.

**2-D COURSES**

**2-D Design**

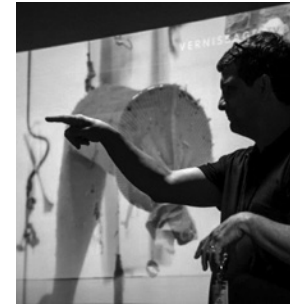
2DD 1303

2-D Design teaches the basic grammar underlying all visual language. Students are introduced to design elements that are common to all works in two dimensions. Students will learn to manipulate movement, line, shape, texture, value, and color to achieve specific artistic goals through practical exercises and to analyze how compositions work throughout the semester. Critiques and demonstrations occur throughout the semester. For those students who express concern about joining the class in person, the possibility of taking part remotely is available. The time allotted to each student is based upon class size. The platform for remote communication will be Zoom. Google Drive will be used as the platform for uploading and sharing images and will require a Gmail address. Students should be comfortable with these methods of online communication. The Glassell School is taking all necessary precautions to ensure a safe in-class working environment to encourage students to experience the course in person in the studio.

**Drawing Fundamentals I**

DRF 1301

In this introductory course, students learn to transpose 3-D objects into 2-D equivalents. While studying the relationships between planes and evaluating proportions, students develop perceptual skills in order to translate these observations to paper. The goals of this course involve the exploration of different representational techniques in black-and-white media and the development of visual



awareness and discrimination. Critiques and demonstrations occur throughout the semester. Assignments and links to video demonstrations for online classes will be posted on Google Classroom. Zoom conferences will be held to go over questions about the assignments. Zoom conferences will be held at a time that works best for everyone, so it is not necessarily the exact time that the class is scheduled. Both Google Classroom and Zoom are free and user-friendly. When class begins, the instructor will email students an in-depth tutorial on how these two programs will be used in the class.



### **Drawing Fundamentals II**

DRF 1302

*Prerequisite: DRF 1301*

The second semester of Drawing Fundamentals continues to develop the student's visual and technical skills in various black-and-white media as initiated in the first semester. In addition, basic color theory is introduced as color concepts are applied to the drawing process. Broader approaches to a more complex range of subject matter are explored. Critiques and demonstrations occur throughout the semester. Class will meet on Zoom on the scheduled day and time. Each class includes a live lecture and discussion using pictorial examples to illustrate the lesson and weekly assignment, in-class exercises and demonstrations of materials and techniques, and a critique of student homework submitted to a shared folder on Google Drive. Before each weekly meeting, students will be provided with the class objective, the homework assignment, and visual information as a preview so they can prepare for conversation and questions during the online session. Students may use a PC or their phones (iPhone or Android) to participate in class meetings. Instructions on how to obtain Zoom and access Google Drive will be provided.



### **Intermediate/Advanced Drawing: Landscape Drawing I & II**

DRA 3314, DRA 3315, DRA 4314, DRA 4315

*Prerequisites: 2DD 1303 and DRF 1302*

For this course, the class will go to a different site each week and draw from the landscape. A wide variety of sites will be introduced, from woodland settings to different types of gardens to more urban environments. Upon meeting at the designated location, we will have a critique on site and then go into the setting to draw. In the beginning of the semester, students will concentrate on specific elements (a tree, the sky, ground planes, reflections, linear and atmospheric perspective, etc.). Advanced students can choose their



own focus according to interest and ability. Throughout the semester, different drawing materials will be introduced and demonstrated. This class offers an in-depth study of drawing nature and allows students to practice social distancing outside while also wearing masks.

### **Intermediate/Advanced Drawing: Ideas & Images I & II**

DRA 3318, DRA 3319, DRA 4318, DRA 4319

*Prerequisites: DRF 1302 and 2DD 1303*

Drawing is about observing, documenting, communicating ideas, unleashing the imagination, and questioning the world in which we live. This course focuses on a series of topics including personal narrative, natural and industrial landscapes, dissected and transformed objects, social and political issues, and the drawing process. Students explore format, scale, technique, and mixed media. The course includes discussions, critiques, and slide presentations. Class will meet on Zoom on the scheduled day and time. Each class includes a live lecture and discussion using pictorial examples to illustrate the lessons and weekly assignments, in-class exercises and demonstrations of materials and techniques, and a critique of student homework submitted to a shared folder on Google Drive. Before each weekly meeting, students will be provided with the class objective, the homework assignment, and visual information as a preview so they can prepare for conversation and questions during the online session. Students may use a PC or their phones (iPhone or Android) to participate in class meetings. Instructions on how to obtain Zoom and access Google Drive will be provided.

### **Intermediate/Advanced Figurative Mixed Media I & II**

DRA 3320, DRA 3321, DRA 4320, DRA 4321

*Prerequisite: DRL 2310*

This online course is designed for students

in the intermediate or advanced levels of life drawing who want to continue to work with the figure and explore a concentration in mixed media. The course will use and combine drawing, painting, and collage (paper, fabric, and found object-based). Students will explore a variety of palettes, textures, value systems, and both representational and abstract interpretations of the figure. Students will examine many periods in art history, starting with ancient art and ending with modern art, using figurative images throughout time to inspire their work. Artists such as Paul Gauguin, Alice Neel, and Pablo Picasso, among many others, will be studied. Weekly videos and demonstrations will analyze compositions, palettes and value systems, artistic styles, and the varieties of realism. Weekly videos and still photographs will be shared through a Facebook group page.

### **Beginning Life Drawing I & II**

DRL 2310, DRL 2311

*Prerequisites: DRF 1301 and 2DD 1303*

Students concentrate on representing an anatomically convincing account of the human figure while focusing on balance, movement, proportion, volume, and space. Short poses build an understanding of anatomy; long poses permit the exploration of media and the development of technique. Two labs on Fridays and Saturdays at 9:30 a.m.-12:30 p.m. provide additional time to work from the model. Critiques and demonstrations occur throughout the semester.

### **Intermediate/Advanced Life Drawing & Painting I & II**

DRL 3310, DRL 3311, DRL 4310, DRL 4311

*Prerequisite: DRL 2311*

This sequence of courses is designed for students who have completed at least two semesters of Beginning Life Drawing and wish to continue working with figurative imagery. Studio time allows for longer, more

complex poses. Students work toward greater control in a variety of wet and dry media. The class includes slide lectures, weekly demonstrations, and ongoing critiques. Advanced students begin to concentrate within one primary medium. Two labs on Fridays and Saturdays at 9:30 a.m.-12:30 p.m. provide additional time to work from the model. Critiques and demonstrations occur throughout the semester.

### **Color**

CLR 2306

*Prerequisites: DRF 1301 and 2DD 1303*

Projects in this class are designed to address the relativity and interaction of color in the visual arts. Emphasis is on learning by direct perception of color phenomena, with studies on juxtaposition, harmony, and quantity executed in paint, colored papers, and nontraditional materials. Students who feel unable to join the class in person may take part remotely via the BlueJeans or Zoom application (instructions will be provided) to discuss work uploaded to a shared Google Drive. The instructor will provide a written description of each new project in advance and explain the project during class time so that both written and oral explanations of the projects will be available. All meetings will be held during the scheduled class time. Students will need a Google account and to be able to take and upload pictures to Google Drive, to feel comfortable working with the Zoom and/or BlueJeans applications, and to have a good Wi-Fi connection.

### **Beginning Collage and Assemblage I & II**

COL 2350, COL 2351

*Prerequisites: DRF 1301 and 2DD 1303, or permission of the instructor*

This course allows students to express themselves not only through traditional art media, but also with objects that are common or unusual: papers, fabrics, printed images, words, machine parts, and things old and new. An overview of the history

of collage and assemblage features slide presentations, videos, demonstrations, and critiques. Students are encouraged to think comprehensively, experiment, share ideas and techniques, and develop integrated and creative collages and assemblages. Collage and Assemblage offers different projects in the fall and spring. Students may enroll for the semesters in either order. (COL 2350 is not a prerequisite for COL 2351.) Class will meet on Zoom on the scheduled day and time. Each class includes a live lecture and discussion using pictorial examples to illustrate the lessons and weekly assignments, in-class exercises and demonstrations of materials and techniques, and a critique of student homework submitted to a shared folder on Google Drive. Before each weekly meeting, students will be provided with the class objective, the homework assignment, and visual information as a preview so they can prepare for conversation and questions during the online session. Students may use a PC or their phones (iPhone or Android) to participate in class meetings. Instructions on how to obtain Zoom and access Google Drive will be provided.

### **Intermediate Collage and Assemblage I & II**

COL 3350, COL 3351

*Prerequisite: COL 2350 or COL 2351, or permission of the instructor*

The genres of collage, assemblage, and found-object art have revolutionized the nature of art and how it is made. In these courses, students develop a personal point of view and a body of work through challenging projects in mixed media that may be approached individually or as collaborative adventures. The class focuses on exploring ideas; collecting materials; experimenting with construction methods; and arranging a cohesive and meaningful collage, relief, box environment, assemblage, or found-object hybrid.

Assignments include book and postcard

alterations, map works, personages, game boards, and more. Class will meet on Zoom on the scheduled day and time. Each class includes a live lecture and discussion using pictorial examples to illustrate the lesson and weekly assignment, in-class exercises and demonstrations of materials and techniques, and a critique of student homework submitted to a shared folder on Google Drive. Before each weekly meeting, students will be provided with the class objective, the homework assignment, and visual information as a preview so they can prepare for conversation and questions during the online session. Students may use a PC or their phones (iPhone or Android) to participate in class meetings. Instructions on how to obtain Zoom and access Google Drive will be provided.

### **Advanced Collage and Assemblage I & II**

COL 4350, COL 4351

*Prerequisite: COL 3350 or COL 3351, or permission of the instructor*

Students continue to participate in many of the assignments featured in Intermediate Collage and Assemblage, but also begin focusing on individualizing their research within this limitless medium. Students meet with the instructor to discuss projects and project series that are worked on throughout the semester. Class will meet on Zoom on the scheduled day and time. Each class includes a live lecture and discussion using pictorial examples to illustrate the lesson and weekly assignment, in-class exercises and demonstrations of materials and techniques, and a critique of student homework submitted to a shared folder on Google Drive. Before each weekly meeting, students will be provided with the class objective, the homework assignment, and visual information as a preview so they can prepare for conversation and questions during the online session. Students may use a PC or their phones (iPhone or Android) to participate in class meetings. Instructions on how to obtain Zoom and access Google Drive will be provided.

### **Beginning Painting I & II**

PAI 2320, PAI 2321

*Prerequisites: DRF 1301 and 2DD 1303*

Students learn to paint in oil and/or acrylic paint. The course is designed to familiarize students with the formal elements of painting and to build their technical proficiency. Students paint in the studio, mostly from observed situations and still-life setups. Critical dialogue and frequent critiques figure largely in the learning



process and encourage each student's personal vision. Online courses will be held via the Zoom or BlueJeans video conferencing application, per the instructor's preference. Students will upload pictures of their in-progress and completed works onto the Google Drive application so that instructors can view and critique works and answer students' questions. The amount of time with each student will be divided based on class size.



### **Intermediate Painting I & II**

PAI 3320, PAI 3321

*Prerequisite: PAI 2321*

Intermediate Painting challenges the idea of what painting can be with several projects designed to stretch each student's technical ability and vision. Formal critiques at the end of each project help determine how well the paintings work. A review of fundamental procedures is included when necessary, but emphasis is placed on personal development. Ongoing references to contemporary painters and demonstrations add to each student's understanding and skill. Online courses will be held via the Zoom or BlueJeans video conferencing application, per the instructor's preference. Students will upload pictures of their in-progress and completed works onto the Google Drive application so that instructors can view and critique works and answer students' questions. The amount of time with each student will be divided based on class size.



### **Intermediate/Advanced Abstract Painting I & II**

PAI 3322, PAI 3323, PAI 4322, PAI 4323

*Prerequisites: DRF 1301, 2DD 1303, DRF 1302, PAI 2321*

This course is for intermediate- and advanced-level students who want to delve further into the practice of abstract painting. It is a studio-centered course and comes on the heels of the Intermediate/Advanced Abstract Painting Essentials Course, which is recommended for those who have not practiced abstract painting. The students work in class and center their attention on a personal strategy to develop their own voice through abstract painting.



### **Advanced Painting I & II**

PAI 4320, PAI 4321

*Prerequisite: PAI 3321*

Advanced-level students are encouraged to develop their own projects and visions through a combination of intensive, independent studio work and ongoing guidance from the instructor. There are at least two formal critique days during the semester. Discussions of exhibitions and research on contemporary painters add to the students' understanding and development of their own painting practices. Online courses will be held via the Zoom or BlueJeans video conferencing application, per the instructor's preference. Students will upload pictures of their in-progress and completed works onto the Google Drive application so that instructors can view and critique works and answer students' questions. The amount of time with each student will be divided based on class size.

### **Beginning Watercolor I & II**

WAT 2380, WAT 2381

*Prerequisites: DRF 1301 and 2DD 1303*

Beginning students are introduced to the inherent properties of watercolor through projects that start with the translation of a single object and progress to include more complex ideas. Critiques and demonstrations occur throughout the semester.

### **Intermediate Watercolor I & II**

WAT 3380, WAT 3381

*Prerequisite: WAT 2381*

Intermediate students review the concepts of composition and color, learn new technical approaches, and are encouraged to develop a disciplined studio practice, with personally expressive images as the goal. Critiques and demonstrations occur throughout the semester.

### **Advanced Watercolor I & II**

WAT 4380, WAT 4381

*Prerequisite: WAT 3381*

This advanced-level watercolor course promotes the development of conceptualization skills and media control. Students are encouraged to develop their own projects. Ongoing class critiques and guidance are provided. Critiques and demonstrations occur throughout the semester.

### **Beginning/Intermediate/Advanced Printmaking: Open Studio**

PRI 2304, PRI 3303, PRI 3304, PRI 4303, PRI 4304

*Prerequisites: DRF 1301 and 2DD 1303*

The Open Studio course provides students with the opportunity to define personal project goals and to execute them with the help of the instructor. In addition to independent projects, the course will be supplemented with technical demonstrations relevant to the class, opportunities for collaboration, and an optional themed print exchange. Beginning students will be guided through demonstrations of a variety of techniques and optional prompts. Advanced students work toward a further refinement of technical procedures with a focus on personal practice and the development of visual content. Critiques and discussions are an important part of the class format. Students are encouraged to have some ideas in mind prior to the start of the semester.

### **Beginning Digital Photography I**

COM 2316

A practical, one-semester introduction to digital photography, this course prepares students for further study in digital imaging. Emphasis is placed on competence with an SLR digital camera, as well as on composition, color, space, shooting, and storing and saving digital files. Basic printing is also covered. Bring your SLR digital camera to the first class meeting. Online courses will be held via the Zoom or

BlueJeans video conferencing application, per the instructor's preference. Students will upload pictures of their in-progress and completed works onto the Google Drive application so that instructors can view and critique works and answer students' questions. The amount of time with each student will be divided based on class size.

### **Beginning Digital Photography II**

COM 2317

*Prerequisite: COM 2316*

Students continue to refine their digital photography skills while improving creativity in composition and developing personal viewpoints. This course offers a more in-depth study of lighting, printing, camera RAW, and different types of photography, such as portraiture, still life, or landscape. Emphasis is on improving skills in camera operation, composition, and personal concepts. Computers are only used for basic printing and RAW-processing procedures. Online classes will be using the Zoom platform. The instructor will provide all the handouts, assigned homework, websites, and other resources on a Google Drive folder. Students are allowed to look at the entire semester and all lectures whenever they want and are encouraged to ask questions regarding anything. Specific instructions will be provided on what will be discussed in the Zoom meetings. Virtual meetings are designated to sharing screens/websites, looking at the student work turned in the Google Drive, and one-on-one discussions about the students' progress.

### **Intermediate Digital Photography I & II**

OM 3316, COM 3317

*Prerequisite: COM 2317 or permission of the instructor*

At the intermediate levels of digital photography, students manipulate digital photos and found images while exploring

the range of ideas Adobe Photoshop makes possible. Students refine their development while learning advanced software techniques and large-scale printing, and exploring hard and soft materials for output. Emphasis is placed on personal development by exploring contemporary styles, personally expressive projects, and ongoing references to contemporary photographers and artists. Online courses will be held via the Zoom or BlueJeans video conferencing application, per the instructor's preference. Students will upload pictures of their in-progress and completed works onto the Google Drive application so that instructors can view and critique works and answer students' questions. The amount of time with each student will be divided based on class size.

### **Photography: Basic Camera and Darkroom Techniques**

PHO 1305

Through this introductory course, students expand their knowledge and understanding of the technical and aesthetic fundamentals of photography, providing a strong foundation for further study of both film and digital photography. Students receive extensive instruction on camera operation, black-and-white film processing techniques, and traditional darkroom printing skills. In-depth class discussions include composition and image making, F-stop and aperture settings, depth of field, lighting, and optics. Beginners are required to use a 35mm film camera, but use of other film camera formats, such as the Holga, is also encouraged. A limited number of film cameras are available for lease. Please bring your camera to the first class meeting.

### **Beginning Photography I & II**

PHO 2305, PHO 2308

*Prerequisite: PHO 1305*

In this course, students refine the black-and-white processing, printing, and conceptual skills learned in Basic Camera and Darkroom Techniques. Emphasis is placed on developing personal viewpoints and becoming confident with the technical aspects of exposures, processing, and printing. Only black-and-white film will be used.

### **Intermediate Photography I & II**

PHO 3305, PHO 3308

*Prerequisite: PHO 2308*

Students continue to refine their processing, printing, and conceptual skills in Intermediate Photography. Emphasis is placed on developing personal viewpoints and becoming proficient with the technical aspects of exposures, processing, and printing.

### **Advanced Photography I & II**

PHO 4305, PHO 4306

*Prerequisite: PHO 3308*

This course emphasizes the use of photography as a vehicle for personal vision and expression through technical, conceptual, and perceptual approaches. Individual and group critiques are conducted.

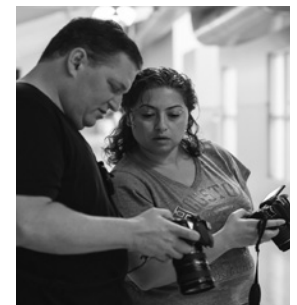
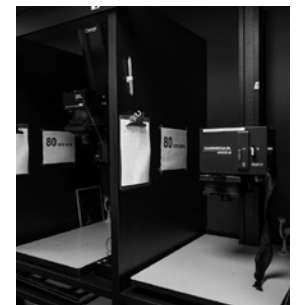
### **CRITIQUE AND SEMINAR COURSES**

#### **Advanced Works on Paper Critique I & II**

CRT 4396, CRT 4397

*Prerequisite: admission by portfolio review*

This critique course is designed for the serious, advanced student working in drawing or water-based media on paper. The course provides an arena for constructive criticism within a nurturing environment. As this is primarily a critique course, most work discussed will be on art that was created outside of the classroom. The amount of time with each student will be divided based on class size. For those working remotely, we will communicate via BlueJeans or Zoom and discuss work uploaded to a shared Google Drive. All meetings will be held during class time. Students will need a Google account or Gmail address and to be able to take and upload pictures to Google Drive, to feel comfortable downloading Zoom and BlueJeans, and to have a good Wi-Fi connection.



### **Advanced Studio Critique I & II**

CRT 4394, CRT 4395

*Prerequisite: permission of the instructor*



This critique course is designed for advanced students in any area trying to develop a fuller understanding of their work through ongoing feedback, discussion, and critique. Students will learn as much by acutely observing and discussing the work of peers as from their own. As in any critique class, work discussed is made independently outside the classroom. The intense and nurturing focus of this course allows students to grow their work substantially. The amount of time with each student will be divided based on class size. For those working remotely, we will communicate via BlueJeans or Zoom and discuss work uploaded to a shared Google Drive. All meetings will be held during class time. Students will need a Google account or Gmail address and to be able to take and upload pictures to Google Drive, to feel comfortable downloading Zoom and BlueJeans, and to have a good Wi-Fi connection.



### **Advanced Studio BLOCK**

CRT 4400 BLOCK Seminar

CRT 4401 BLOCK Critique

*Prerequisite: admission by application*

The Advanced Studio BLOCK program will be run by Francesca Fuchs with the addition of two-hour morning seminars led by Laura August, PhD. This intensely focused program is for advanced students with their own studios and ongoing studio practices. Each participant receives weekly individual critiques with Glassell faculty and Houston-area artists, critics, and curators. The program encourages the development of a peer group of artists, allowing for lasting interactions and shared learning. Weekly seminars require advance preparation and focus on contemporary artists' practices, combining lecture, discussion, and field trips. The BLOCK expects significant developments in participants' work and their presentation of it. Included in the \$1,800 fee, students have access to all areas of the school equipment/classrooms within regular school hours outside of class times. There will be a curated exhibition after the conclusion of each year. The amount of time with each student will be divided based on class size. Students working remotely will communicate via BlueJeans or Zoom and discuss work uploaded to a shared Google Drive. All meetings will be held during class time. Students will need a Google account or Gmail address, be able to take and upload pictures to Google



Drive, feel comfortable downloading Zoom and BlueJeans, and have a good W-Fi connection.

**Please note:** This focused, year-long program including seminar and critique is for advanced students with their own studios and ongoing practices. BLOCK only takes applications once a year and the next submission deadline will be Spring 2021.

### **3-D COURSES**

#### **3-D Design**

3DD 1304

This course explores how to make decisions about form; how to affect the way form is seen using color, scale, mass, line, plane, texture, and balance; how to apply the elements of design to different materials; and how to express emotions, attitudes, and ideas with form. These elements are taught within the context of 3-D objects, along with the practical application of the elements of design. A brief video demonstration as well as weekly handouts will be uploaded to Dropbox and/or Google Docs. These materials will allow both in-person and online students to complete all assignments. Questions will be addressed in either a Facebook group, Zoom, or via email.

#### **Beginning Sculpture I**

SCU 2330

*Prerequisite: 3DD 1304 (DRF 1301 is highly recommended)*

One of two required beginning-level sculpture courses, this course introduces students to the possibilities of sculptural form and space while exploring the aesthetic and conceptual potential of materials and processes such as clay, plaster, and mold making. Basic techniques are introduced alongside slide presentations and critiques to help students become familiar with the ideas that form the foundation of contemporary sculpture. Hand tools, power

tools, mold-making techniques, ceramic processes, and other practices are explored. For students who feel more comfortable with online attendance, a remote option will be offered. Online and in-person students will each receive an equitable amount of the instructor's attention. For those working remotely, demonstrations and group discussions will use Zoom, BlueJeans, or similar platforms and images of artwork and demonstrations will be placed in Google Dropbox or similar. We will discuss student work via these same platforms. All meetings will be held during class time so that online and in-person students will be part of the same community. Online students will need to feel comfortable downloading Zoom or similar applications.

#### **Beginning Sculpture II**

SCU 2331

*Prerequisite: 3DD 1304 (DRF 1301 is highly recommended)*

One of two required beginning-level sculpture courses, the goal of this course is to acquaint students with the fundamental materials and processes typically used in the course of fabricating sculpture. Emphasis is placed on the relationships between sculptural materials and sculptural design, with a specific focus on the use of wood and metal. Traditional materials and tools are demonstrated, along with traditional techniques such as fabricating. Students are encouraged to experiment and develop their own artistic goals. For students who feel more comfortable with online attendance, a remote option will be offered. Online and in-person students will each receive an equitable amount of the instructor's attention. For those working remotely, demonstrations and group discussions will use Zoom, BlueJeans, or similar platforms and images of artwork and demonstrations will be placed in Google Dropbox or similar. We will discuss student work via these same platforms. All meetings will be held during

class time so that online and in-person students will be part of the same community. Online students will need to feel comfortable downloading Zoom or similar applications.

### **Intermediate/Advanced Sculpture: Mixed Media I & II**

SCU 3333, SCU 3334, SCU 4333, SCU 4334

*Prerequisite: SCU 2331*

Intermediate students focus on the technical and conceptual issues of contemporary sculpture using wood, clay, plaster, and steel as primary media. Advanced students focus on the production of work in the studio, using a wider variety of media and also addressing issues of format, which are tailored to particular interests. Group and individual critiques, as well as slide presentations, are incorporated. For students who feel more comfortable with online attendance, a remote option will be offered. Online and in-person students will each receive an equitable amount of the instructor's attention. For those working remotely, demonstrations and group discussions will use Zoom, BlueJeans, or similar platforms and images of artwork and demonstrations will be placed in Google Dropbox or similar. We will discuss student work via these same platforms. All meetings will be held during class time so that online and in-person students will be part of the same community. Online students will need to feel comfortable downloading Zoom or similar applications.

### **Beginning/Intermediate/Advanced Foundry I & II**

FOU 2335, FOU 2336, FOU 3335, FOU 3336, FOU 4335, FOU 4336

*Prerequisite: SCU 2330*

Students are introduced to lost-wax casting using aluminum and bronze; learn to work with wax; discover techniques of investment and procedures for pouring molten metal; and gain experience with mold making, welding, chasing, and patina applications.

The course also examines the history of metal casting in industry and the fine arts. Projects are executed on a small scale to allow students to complete their work within the semester.

### **Beginning Ceramics I & II**

CER 2340, CER 2341

*Prerequisite: 3DD 1304 (DRF 1301 is highly recommended)*

This course introduces students to the tools, techniques, and vocabulary of clay through lectures, demonstrations, and studio participation. Emphasis is placed on problem solving, with clay as the design medium, using the traditional techniques of hand-building and wheel-throwing.

### **Beginning/Intermediate Ceramics: Hand-Building I & II**

CER 2346, CER 2347, CER 3346, CER 3347

*Prerequisite: 3DD 1304*

This course will concentrate on the multiple techniques ceramics artists use to build forms. The student will explore forms and molds, and slab and coil construction. It is an excellent place for the student new to ceramics to develop basic skills and learn about clay, building techniques, and firing and glazing. Intermediate students will be challenged by more sophisticated projects using multiple building techniques to make larger and sculptural pieces. All students will be asked to participate in technical lectures, glazing and firing processes, and in-class critiques. It is an opportunity for a sound foundation for further ceramic study for the beginning student and further expansion of skills and techniques for the intermediate student. Students will have the option to meet either in the building or online via BlueJeans, Zoom, or a similar platform during the same class time to retain a communal environment. Students who choose to meet virtually will still be able to bring work in to be fired and will have access to glazes and equipment.

### **Intermediate Ceramics: Hand-Building I & II**

CER 3346, CER 3347

*Prerequisite: CER 2341*

In this two-semester course, students enhance their hand-building skills and learn alternative building processes. Projects include building with solid clay, constructing with extrusions, and working on individual projects. In addition, there is an emphasis on glaze making, specifically related to ceramic sculptural surfaces.

### **Intermediate/Advanced Ceramics: Alchemy to Art: Glaze Materials**

CER 3356, CER 3357, CER 4356, CER 4357

*Prerequisite: CER 2341*

This course is everything glaze! Through guided experiments, lectures, and demonstrations, students will go through a series of projects examining glaze materials. While there will be a heavy focus on working with glaze recipes and developing a personal surface palette, students will also learn how to implement some of these same materials in decorative manners. Students will learn how to make and/or adjust a glaze recipe and will learn decorating processes, plus will hone their glaze applications. Students should come with some bisqueware ready to glaze.

### **Intermediate Ceramics: Wheel-Throwing I & II**

CER 3348, CER 3349

*Prerequisite: CER 2341*

In this course, students continue to develop their wheel-throwing skills. A focus is placed on vessels with multiple components such as handles, lids, and spouts. Additionally, students learn to increase the scale of their vessels, as well as to use different methods of altering pots. Glaze research focuses on surfaces for utilitarian wares.

### **Intermediate Ceramics: Narrative Sculpture I & II**

CER 3350, CER 3351

*Prerequisite: CER 3341*

The focus of this class is narrative sculpture. Using images and materials to create personal stories, students are encouraged to write, draw, think, and craft. Topics explored include how to use images to create symbolic meaning and how to sculpt stories that allude to universal themes, fantasy, or allegory. While clay is a basis, the work is not limited solely to the ceramic process. A broad range of materials and techniques are covered. Students will have



the option to meet either in the building or online via BlueJeans, Zoom, or a similar platform during the same class time to retain a communal environment. Students who choose to meet virtually will still be able to bring work in to be fired and will have access to glazes and equipment.



### **Advanced Ceramics I & II**

CER 4340, CER 4341

*Prerequisite: CER 3341*

In consultation with the instructor, each student proposes a self-directed investigation, with clay as the medium for visual expression. During the semester, the student's goals and direction are discussed, methods of presentation are addressed, and the student's critical analyses of the work are continually reviewed. Students will have the option to meet either in the building or online via BlueJeans, Zoom, or a similar platform during the same class time to retain a communal environment. Students who choose to meet virtually will still be able to bring work in to be fired and will have access to glazes and equipment.



### **Beginning Jewelry I & II**

JWL 2360, JWL 2361

*Prerequisite: 3DD 1304 (DRF 1301 is highly recommended)*

This two-semester course is the basis for any further jewelry explorations. In the first semester, students acquire the basic skills needed to fabricate jewelry out of nonferrous metals (copper, brass, nickel, sterling, and gold). A progression of techniques—from sawing, riveting, and soldering to bezel-stone setting—is combined with the refinement of design sensibilities and aesthetic considerations. The second semester continues the development of fabrication skills; examines the possibilities of content; and introduces additional techniques that explore texture, volume, and alternative methods of setting stones.



### **Intermediate Jewelry I & II**

JWL 3360, JWL 3361

*Prerequisite: JWL 2361*

The first semester of this two-semester course explores the lost-wax casting process with an emphasis on matrix development. The second semester focuses on mechanisms as they apply to both jewelry and containers. Techniques included are hinges, clasps, and stone setting.



### **Advanced Jewelry: Special Topics I & II**

JWL 4360, JWL 4361

*Prerequisite: permission of the instructor*

This advanced-level course introduces students to more complex forming processes and surface treatments such as forging, raising, patinas, and plastics. Independent development is emphasized as students combine process with concepts and content.

### **Beginning/Intermediate/Advanced Jewelry: Enameling I & II**

ENM 2362, ENM 2363, ENM 3362, ENM 3363, ENM 4362, ENM 4363

*Prerequisite: 3DD 1304 (DRF 1301 is highly recommended)*

The first semester focuses on the techniques of stencil, graffiti, and cloisonné, exposing the beginning student to a wide range of approaches. The second semester introduces etching techniques for two projects, one on silver and one on copper, using the *champlevé* technique. A third project includes enameling on a chased or etched surface, or *basse-taille*. The intermediate student explores sawed *plique-à-jour* (backless enameling), enameling on a hydraulically pressed form, and silkscreening enamels. Students at the advanced level make decals and steel-cut dies for limited-edition production pieces. More advanced classes may include electroforming, painting, spraying enamels, and other combinations of techniques.

### **Advanced Enameling I & II**

ENM 4362, ENM 4363

*Prerequisite: ENM 3363*

At the advanced level, the student is ready to use the technical information of the first four semesters to create a more personal direction. Each semester begins with several samples that will explore specific techniques. There will be demonstrations of each sample and group critique, discussion,

and sharing. The final project of the semester is more complex and can involve enamel and metal techniques. There will be discussion and direction each week to help to facilitate that design. Instructor approval is required and completion of all the projects assigned in the first fourth levels.





## FALL 2020 CLASS SCHEDULE

### ART HISTORY COURSES

#### Art History Survey I: Caveman to Medieval

ARH 307

A	Thursday	10:00 a.m.-12:00 noon	Online Only	Tahinci
---	----------	-----------------------	-------------	---------

#### Art History: Pablo Picasso and His Artistic Legacy

ARH 320

N	Wednesday	2:00-4:00 p.m.	Online Only	Tahinci
---	-----------	----------------	-------------	---------

#### Art History: Modern & Contemporary Art at the MFAH

ARH 310

A	Wednesday	10:00 a.m.-12:00 noon	Online Only	Tahinci
---	-----------	-----------------------	-------------	---------

#### Art History: Women in Art

ARH 312

A	Thursday	2:00-4:00 p.m.	Online Only	Tahinci
---	----------	----------------	-------------	---------

### 2-D STUDIO COURSES

#### 2-D Design

2DD 1303

A	Monday	9:30 a.m.-12:30 p.m.	In Person & Online	Johnson
NA	Monday	6:30-9:30 p.m.	In Person & Online	Ponder

#### Drawing Fundamentals I

DRF 1301

A	Monday	1:00-4:00 p.m.	In Person Only	Bise
NA	Monday	6:30-9:30 p.m.	In Person & Online	Johnson
D	Tuesday	9:30 a.m.-12:30 p.m.	In Person Only	Johnson
C	Thursday	9:30 a.m.-12:30 p.m.	In Person Only	Kerl
F	Thursday	1:00-4:00 p.m.	In Person Only	Masson

#### Drawing Fundamentals II

DRF 1302

C	Tuesday	9:30 a.m.-12:30 p.m.	Online Only	Cosgrove
D	Wednesday	9:30 a.m.-12:30 p.m.	In Person Only	Masson

#### Intermediate/Advanced Drawing: Landscape Drawing I & II

DRA 3314, DRA 3315, DRA 4314, DRA 4315

A	Friday	9:30 a.m.-12:30 p.m.	In Person Only	Portman
---	--------	----------------------	----------------	---------

#### Intermediate/Advanced Drawing: Ideas & Images I & II

DRA 3318, DRA 3319, DRA 4318, DRA 4319

A	Friday	9:30 a.m.-12:30 p.m.	Online Only	Cosgrove
---	--------	----------------------	-------------	----------

**Intermediate/Advanced Figurative Mixed Media I & II***DRA 3320, DRA 3321, DRA 4320, DRA 4321*

A Tuesday 9:30 a.m.-12:30 p.m. Online Only Palmer

**Beginning Life Drawing I & II***DRL 2310, DRL 2311*

C Monday 9:30 a.m.-12:30 p.m. In Person Only Kerl

NA Thursday 6:30-9:30 p.m. In Person Only Greenwalt

**Intermediate/Advanced Life Drawing & Painting I & II***DRL 3310, DRL 3311, DRL 4310, DRL 4311*

B Tuesday 1:00-4:00 p.m. In Person Only Palmer

NA Thursday 6:30-9:30 p.m. In Person Only Greenwalt

**Color***CLR 2306*

B Thursday 9:30 a.m.-12:30 p.m. In Person &amp; Online Ruello

**Beginning/Intermediate/Advanced Collage and Assemblage I & II***COL 2350, COL 2351, COL 3350, COL 3351, COL 4350, COL 4351*

A Monday 9:30 a.m.-12:30 p.m. Online Only Cosgrove

**Beginning Painting I & II***PAI 2320, PAI 2321*

C Monday 9:30 a.m.-12:30 p.m. In Person &amp; Online Ruello

D Tuesday 1:00-4:00 p.m. In Person &amp; Online Ruello

N Tuesday 6:30-9:30 p.m. In Person &amp; Online Bise

A Thursday 9:30 a.m.-12:30 p.m. In Person Only Masson

**Intermediate Painting I & II***PAI 3320, PAI 3321*

B Monday 9:30 a.m.-12:30 p.m. In Person &amp; Online Portman

N Monday 6:30-9:30 p.m. In Person &amp; Online Ruello

C Tuesday 9:30 a.m.-12:30 p.m. In Person &amp; Online Fuchs

A Tuesday 1:00-4:00 p.m. In Person Only Masson

**Intermediate/Advanced Abstract Painting I & II***PAI 3322, PAI 3323, PAI 4322, PAI 4323*

A Wednesday 1:00-4:00 p.m. In Person Only Masson

**Advanced Painting I & II***PAI 4320, PAI 4321*

N Tuesday 6:30-9:30 p.m. In Person &amp; Online Portman

B Wednesday 9:30 a.m.-12:30 p.m. In Person &amp; Online Fuchs

A Thursday 9:30 a.m.-12:30 p.m. In Person &amp; Online Bise

C Thursday 1:00-4:00 p.m. In Person &amp; Online Portman

**Beginning/Intermediate/Advanced Watercolor I & II***WAT 2380, WAT 2381, WAT 3380, WAT 3381, WAT 4380, WAT 4381*

A Wednesday 9:30 a.m.-12:30 p.m. In Person Only Kerl

**Beginning/Intermediate/Advanced Printmaking: Open Studio***PRI 2304, PRI 3303, PRI 3304, PRI 4303, PRI 4304*

A Wednesday 9:30 a.m.-12:30 p.m. In Person Only Johnson

**Beginning Digital Photography I & II***COM 2316, COM 2317*

A Monday 9:30 a.m.-12:30 p.m. In Person &amp; Online Ponder

N Tuesday 6:30-9:30 p.m. In Person &amp; Online Ponder

**Intermediate Digital Photography I & II***COM 3316, COM 3317*

A Tuesday 9:30 a.m.-12:30 p.m. Ponder

**Photography: Basic Camera and Darkroom Techniques***PHO 1305*

N Tuesday 6:30-9:30 p.m. In Person Only Blakemore

**Beginning/Intermediate Photography I & II***PHO 2305, PHO 2308, PHO 3305, PHO 3308*

N Wednesday 6:30-9:30 p.m. In Person Only Blakemore

**Intermediate Photography I & II***PHO 3305, PHO 3308*

B Wednesday 1:00-4:00 p.m. In Person Only Blakemore

**Advanced Photography I & II***PHO 4305, PHO 4306*

A Thursday 9:30 a.m.-12:30 p.m. In Person Only Blakemore

N Thursday 6:30-9:30 p.m. In Person Only Blakemore

**CRITIQUE AND SEMINAR COURSES****Advanced Works on Paper Critique I & II***CRT 4396, CRT 4397*

A Tuesday 9:30 a.m.-12:30 p.m. In Person &amp; Online Ruello

**Advanced Studio Critique I & II***CRT 4394, CRT 4395*

B Tuesday 1:00-4:00 p.m. In-Person &amp; Online Fuchs

---

**Advanced Studio BLOCK***CRT 4400 BLOCK Seminar*

A Friday 9:30 a.m.-12:30 p.m. In Person &amp; Online August

*CRT 4401 BLOCK Critique*

B Friday 1:00-5:00 p.m. In Person &amp; Online Fuchs

---

**3-D STUDIO COURSES****3-D Design***3DD 1304*

B Monday 1:00-4:00 p.m. In Person &amp; Online Dennard

A Tuesday 9:30 a.m.-12:30 p.m. In Person Only Garcia

---

**Beginning Sculpture I & II***SCU 2330, SCU 2331*

N Monday 6:30-9:30 p.m. In Person &amp; Online Hill

B Wednesday 9:30 a.m.-12:30 p.m. In Person &amp; Online Hill

---

**Intermediate/Advanced Sculpture: Mixed Media I & II***SCU 3333, SCU 3334, SCU 4333, SCU 4334*

A Tuesday 9:30 a.m.-12:30 p.m. In Person &amp; Online Hill

N Tuesday 6:30-9:30 p.m. In Person &amp; Online Hill

---

**Beginning/Intermediate/Advanced Foundry I & II***FOU 2335, FOU 2336, FOU 3335, FOU 3336, FOU 4335, FOU 4336*

N Thursday 6:30-9:30 p.m. In Person Only Garcia

---

**Beginning Ceramics I & II***CER 2340, CER 2341*

A Thursday 9:30 a.m.-12:30 p.m. In Person Only Forster

N Thursday 6:30-9:30 p.m. In Person Only Dennard

---

**Beginning/Intermediate Ceramics: Hand-Building I & II***CER 2346, CER 2347, CER 3346, CER 3347*

N Monday 6:30-9:30 p.m. In Person &amp; Online Dennard

---

**Intermediate Ceramics: Hand-Building I & II***CER 3346, CER 3347*

A Wednesday 9:30 a.m.-12:30 p.m. In Person Only Forster

---

**Intermediate/Advanced Ceramics: Alchemy to Art: Glaze Materials***CER 3356, CER 3357, CER 4356, CER 4357*

A Wednesday 1:00-4:00 p.m. In Person Only Forster

---

**Intermediate Ceramics: Wheel-Throwing I & II***CER 3348, CER 3349*

A Tuesday 9:30 a.m.-12:30 p.m. In Person Only Forster

---

**Intermediate Ceramics: Narrative Sculpture I & II***CER 3350, CER 3351*

A Friday 9:30 a.m.-12:30 p.m. In Person &amp; Online Dennard

---

**Advanced Ceramics I & II***CER 4340, CER 4341*

N Tuesday 6:30-9:30 p.m. In Person &amp; Online Forster

---

**Beginning Jewelry I & II***JWL 2360, JWL 2361*

A Tuesday 9:30 a.m.-12:30 p.m. In Person Only Zilker

---

**Beginning/Intermediate Jewelry I & II***JWL 2360, JWL 2361, JWL 3360, JWL 3361*

N Wednesday 6:30-9:30 p.m. In Person Only Falkenhagen

---

**Intermediate Jewelry I & II***JWL 3360, JWL 3361*

A Wednesday 9:30 a.m.-12:30 p.m. In Person Only Zilker

---

**Advanced Jewelry: Special Topics I & II***JWL 4360, JWL 4361*

A Thursday 9:30 a.m.-12:30 p.m. In Person Only Falkenhagen

---

**Beginning/Intermediate/Advanced Jewelry: Enameling I & II***ENM 2362, ENM 2363, ENM 3362, ENM 3363, ENM 4362, ENM 4363*

A Monday 9:30 a.m.-12:30 p.m. In Person Only Harrell

N Monday 6:30-9:30 p.m. In Person Only Harrell

---

**Advanced Jewelry: Enameling I & II***ENM 4362, ENM 4363*

B Monday 1:00-4:00 p.m. In Person Only Harrell

## STUDENT EVENTS

### Annual Gala

The school hosts an annual gala and benefit auction each spring. This event is the only fundraising event dedicated to the school, and funds raised support operating costs for the school's programming. More information, including student ticket information, is available at the end of the spring semester.

### Lectures

Both the Studio School and the Core Program sponsor a number of free lectures each year. All students are encouraged to attend. More information on lectures is available in the MFAH calendar.

### Levant Foundation Gallery

The first-floor gallery shows the work of Glassell-related artists, including students, faculty, and alumni. Annual shows include the Juried Student Exhibition, the Block Show, and the Core Show.

### Leslie and Brad Bucher Gallery

The second-floor gallery shows the work of the Core fellows program and related artists, as well as the Certificate of Achievement program's graduate exhibition at the end of the spring semester.

### Orton Gallery

The third-floor gallery focuses on current student work. Shows include departmental work, fundamental-class work, first-semester work, and faculty-selected exhibitions.

### Kinder Morgan Exhibition Program

The Glassell School of Art is proud to present a series of exhibitions at the Kinder Morgan Building in downtown Houston. The series features artwork by Studio School faculty and students, highlighting the depth and variety of courses that the Glassell School offers. Information on each exhibition, including how to submit work, is available from the administrative office.

### Leadership Circle

For those who wish to contribute \$2,500 or more and receive benefits that reach throughout the Museum, the Leadership Circle offers exclusive access to the MFAH. Leadership Circle members who designate a portion of or their entire gift to the Glassell School will also receive SAO benefits at the level of their Glassell donation

# Online Art History Course Registration Form

## DO NOT USE THIS FORM FOR STUDIO COURSES.

Use this form to register for online art history courses by email or by mail. Please register early, as undersubscribed sections are canceled.

**Workshops:** Students must be at least 18 years of age and have completed high school or high school equivalency testing to enroll.

Previously enrolled    First time enrolled

Name \_\_\_\_\_

Address \_\_\_\_\_

Phone \_\_\_\_\_

City \_\_\_\_\_

Zip code \_\_\_\_\_

Email address \_\_\_\_\_

Course number \_\_\_\_\_

Day \_\_\_\_\_

Time \_\_\_\_\_

Instructor \_\_\_\_\_

Course number \_\_\_\_\_

Day \_\_\_\_\_

Time \_\_\_\_\_

Instructor \_\_\_\_\_

Course number \_\_\_\_\_

Day \_\_\_\_\_

Time \_\_\_\_\_

Instructor \_\_\_\_\_

### How did you hear about the Glassell School?

MFAH    *Houston Chronicle*    Web    Instagram    Other \_\_\_\_\_

I have read and understand all admission requirements and policies, including the refund policy available on the Glassell Studio School website ([mfah.org/studioschool](http://mfah.org/studioschool)). By signing below, I also agree to charges to my credit card in the amount due. Registration will not be processed without signature of student. Proxy signatures not accepted.

Signature \_\_\_\_\_

(Continued on next page)

## MFAH Patron-Level Membership

MFAH members at the Patron level and above are eligible for a 5% discount. Member benefits are nontransferable and may be used only by persons on the member account.

I am not an MFAH member, but I would like to join, and my dues are included.

(Select a level below to be eligible for 5% discount.)

\$200 Patron    \$350 Supporting    \$800 Sponsor    \$1,500 Benefactor

I am an MFAH member. My information is below.

Name of member, as it appears on your membership card

Member ID #

Expiration date

(located under the bar code on your membership card)

For information about the many benefits of MFAH membership, visit [mfah.org/member](http://mfah.org/member) or call 713-639-7550.

\$ \_\_\_\_\_ Tuition\*

\$ \_\_\_\_\_ Donation to Glassell School

\$ \_\_\_\_\_ Total amount

**Tuition and lab fees for art history courses are listed on page 6. Tuition and lab fees for workshops are listed with each course description.**

My check is enclosed.

Charge payment to my credit card:

Visa

MasterCard

American Express

Discover

Card number

CVC

Expiration date

Name as appears on card (please print)

Name (signature)

**By email:** [registration@mfah.org](mailto:registration@mfah.org)

**By mail:**

Studio School Registrar  
MFAH, Glassell School of Art  
P.O. Box 6826  
Houston, TX 77265-6826

## FACULTY AND STAFF

### Staff

**Joseph Havel**  
Director

**Jennifer Cronin**  
Associate Director

**Patrick Palmer**  
Faculty Chair and Dean

**Sandra Zilker**  
Associate Dean of Student Activities

**Mathilde Bowen**  
Registrar

**Shelby O'Dell**  
Studio School Program Coordinator

**Lindsay Kayser**  
Communications Liaison &  
Assistant to the Director

### Faculty



**Laura August**  
PhD, University of Texas at Austin; MA, University of Texas at Austin; BA, Georgia College & State University

Laura August is a writer and independent curator. She has received The Creative Capital | Andy Warhol Foundation Arts Writers Grant for her writing in Central America; The IDEA Fund Stimulus Grant for her exhibition *Mud & Blue*; and the HAA Support for Artists and Creative Individuals Grant for *Studio Visit*, a book of interviews with Houston artists. She served as critic-in-residence at the Core Program at the Museum of Fine Arts, Houston, from 2016-18. In 2018-19, she curated *citysinging* (Lawndale, Houston, TX), *Mud & Blue* (Houston, TX), *To look at the sea is to become what one is* (Radiator Arts, New York, NY), *The hurt can also be dyed blue* (Centro Cultural de España, Guatemala), *Sanación* (The

Anderson, Richmond, VA), *Yvonne writes letters to the sky* (San Jacinto Community College, Houston, TX), and *To Weave Blue* (University of Memphis, TN). She is founding director of Yvonne, a residential project space in Guatemala City, where she divides her time with Houston.



**Michael Bise**  
MFA, University of Houston; BFA, University of North Texas

Michael Bise has taught painting

at the Glassell School since 2013.

He received a BFA in drawing and painting from the University of North Texas in 2001 and an MFA in drawing and painting from the University of Houston in 2005. His work has been shown at the Contemporary Arts Museum Houston, the Art Museum of Southeast Texas, the McKinney Avenue Contemporary in Dallas, and Fort Worth Contemporary Arts at TCU. He was the recipient of a Houston Arts Alliance Individual Artist Grant and the Hunting Art Prize, a finalist for Artadia in 2014, and a nominee for the Texas Contemporary Award in 2012. His work is in the collections of the Museum of Fine Arts, Houston; the Houston Airport System; the City of Houston; and the Art Museum of Southeast Texas, Beaumont. He regularly contributes criticism and reviews for the online art journal *Glasstire*. [mbise@mfah.org](mailto:mbise@mfah.org)



**Amy Blakemore**  
Department Head, Photography  
MFA, University of Texas; BS, BA, Drury College

Amy Blakemore

has been teaching photography at the Glassell School since 1985 and is the head of the photography department. She received a BS in psychology and a BA in art from Drury College (now Drury University) in Springfield, Missouri, and an MFA from the University of Texas at Austin. She was also a Core Program Artist in Residence at the Glassell School.

Blakemore's photographs have been exhibited at the Whitney Museum of American Art 2006 Biennial, Day for Night. Her twenty-year retrospective (2009) at the Museum of Fine Arts, Houston, traveled to the Seattle Art Museum and the Oklahoma City Museum of Art. Art League Houston honored Blakemore as the Texas Artist of the Year in 2015 and presented an accompanying exhibition of her work. Blakemore has exhibited with Inman Gallery in Houston for more than two decades. [ablakemore@mfah.org](mailto:ablakemore@mfah.org)



**Charlotte Cosgrove**  
MFA, University of Pennsylvania; BA, Pennsylvania State University

Charlotte Cosgrove joined the Glassell faculty in 1967, teaching studio and art history courses. She completed a bachelor of applied art degree at Pennsylvania State University and an MFA in painting from the University of Pennsylvania. Solo exhibitions include *A Transitory Realm* (2009) at the Art Museum of Southeast Texas in Beaumont and *House of Shadows* (2007) at the Ellen Noël Art Museum in Odessa, Texas. Cosgrove's work was part of *Double Take* (2001-02), a group exhibition that she organized and curated, which originated at the Art League of Houston and traveled around the state. Cosgrove's work has been included in numerous exhibitions throughout Texas and is in the permanent collection of the Museum of Fine Arts, Houston; the Art Museum of Southeast Texas; and private collections. Cosgrove also taught at the High School for the Performing and Visual Arts, and cofounded a professional photography business in Houston. [ccosgrove@mfah.org](mailto:ccosgrove@mfah.org)



**Sharon Dennard**  
BA, University of Houston  
  
Sharon Dennard has taught ceramics at the Glassell

School since 2003. Her relationship with visual art began in the fashion industry. The forms, patterns, and colors used in clothing sparked a creativity and interest in design that led her to a degree in photojournalism from the University of Houston. She continued her studies at the Glassell School of Art and expanded her interest from photography to sculpture, working primarily in clay and wood. She has exhibited in galleries and museums throughout the United States. Her work has been featured in *Southwest Art*, *Texas Monthly*, the *Houston Chronicle*, *500 Cups: Ceramic Explorations of Utility & Grace*, and *PaperCity Magazine*. Outside of the studio, Dennard frequently juries exhibitions and lectures on subjects such as ceramic sculpture and design. She also teaches at the High School for Performing and Visual Arts. [sdennard@mfa.hou](mailto:sdennard@mfa.hou)



**Diane Falkenhagen**  
MFA, University of Houston;  
BFA, University of North Texas

Diane Falkenhagen holds a BFA from the University of North Texas and an MFA from the University of Houston. She is a native of Texas, but has also lived for extended periods in Brazil, Alaska, and England. She maintains a private studio on west Galveston Island. Falkenhagen is best known for her fabricated, one-of-a-kind jewelry. Her mixed-media compositions often combine evocative pictorial imagery with fabricated metal forms and a diverse range of art media. Her work is an unconventional marriage of material and content that references myriad interests including memory, metaphor, figuration, romanticism,

historical ornament, art history, and iconography.



**Jeff Forster**  
Department Head, Ceramics MFA, Southern Illinois University; BA, St. John's University

Jeff Forster joined the Glassell School faculty in 2009 and is the head of the ceramics department. He has a BA from St. John's University and an MFA from Southern Illinois University. He has exhibited nationally and internationally, winning awards including Juror's Choice Award in Ceramic Object/Conceptual Material and the Luis Jiménez Award for First Place in Sculpture on Campus at Southern Illinois University. Forster was awarded the Helen Drutt Studio Fellowship with his residency at the Houston Center for Contemporary Craft and completed residencies at Lone Star College-North Harris and the Armory Arts Center. Besides teaching and maintaining a studio practice, Forster sits on the Artist in Residence Committee at the Houston Center for Contemporary Craft and the Artist Advisory Committee for Fresh Arts. He also served on the board of the National Council on Education for the Ceramic Arts for the 47th annual conference in Houston. [jforster@mfa.hou](mailto:jforster@mfa.hou)



**Francesca Fuchs**  
Department Head, 2-D MFA, Kunstakademie Düsseldorf, Germany; BFA, Wimbledon

School of Art, Great Britain; BA, Bristol University, Great Britain

Francesca Fuchs has taught at the Glassell School since 1997, where she is head of the 2-D department. She completed a BFA at London's Wimbledon School of Art (now Wimbledon College of Arts) in 1993 and an MFA at the Kunstakademie Düsseldorf, Germany. Fuchs came

to Houston in 1996 for the Core Residency Program of the Glassell School of Art. Fuchs's work has been shown at the Modern Art Museum of Fort Worth; the Museum of Fine Arts, Houston; the Contemporary Arts Museum Houston; and the Institute of Contemporary Arts, London, among others. She has been the recipient of two Artadia Awards and three Individual Artist Grants from the City of Houston. She has taught at University of Virginia, Charlottesville; Rice University; and University of Houston. Fuchs shows with Inman Gallery in Houston and Talley Dunn Gallery in Dallas. [fuchs@mfa.hou](mailto:fuchs@mfa.hou)



**Carlos David Garcia**  
Foundry Manager MA, Royal College of Art, London; BFA, University of Houston

Carlos Garcia began teaching as a foundry instructor at the Glassell School in the fall of 2019. Trained as a sculptor, he has extensive experience working with metals, wood, and a variety of other media. His practice currently centers on bronze casting, using found objects for inspiration for larger-scale works. He earned his MA from the Royal College of Art in London and his BFA from the University of Houston. He worked for Mike Smith Studios in London, completing projects for artists like Julian Opie, Sean Scully, and Mark Wallinger. Now working in Houston, he has exhibited both in the U.K. and Texas. [cgarcia@mfa.hou](mailto:cgarcia@mfa.hou)



**Mark Greenwalt**  
MFA, Pratt Institute, Brooklyn, NY; MA, Stephen F. Austin State University, TX; BA, Stephen F. Austin State University, TX

Mark Greenwalt is professor of art at College of the Mainland and current president of the Texas Association of Schools of Art. Prior to 2000, Greenwalt taught drawing and painting courses for the University of Houston,

Rice University, and the Glassell School. For more than 20 years he has been represented by Houston's Hooks-Epstein Gallery. Most recently Greenwalt participated in an art and pathology collaborative project with the University of Texas Medical Branch and Galveston Arts Center. Through frequent cycles of forming, deforming, and reforming imagery, Greenwalt's nondeterministic figures evolve on drawing surfaces parallel to the greater world in which nature and culture increasingly fuse in wonderful and terrifying ways. [mgreenwalt@mfa.hou](mailto:mgreenwalt@mfa.hou)



**Jan Harrell**  
MFA, University of Houston; BFA, Texas Tech University

Jan Harrell is a metalsmith,

enamelist, and educator who has been on the Glassell School faculty since 1993, teaching enameling. Her love for glass and metal media was fueled by her early childhood years in Japan and then grew into her college and graduate-school vocation and passion. Harrell teaches workshops across the country and participates in invitational and juried exhibitions. Her work is in the permanent collection of the Houston Airport System at IAH, the Kamm Teapot Foundation, the Enamel Arts Foundation, and several private collections. More than 15 books and publications feature her work. Harrell received a BFA from Texas Tech University and an MFA in sculpture from the University of Houston. [jharrell@mfa.hou](mailto:jharrell@mfa.hou)



**J Hill**  
MFA, BA, Stephen F. Austin State University

J Hill has been teaching sculpture at

the Glassell School since 1995. He is a sculptor who has had multiple one-person and group exhibitions in galleries, nonprofits, and museum spaces. Hill's works and social projects

have been executed in venues throughout Texas, in cities such as Chicago and Baltimore, and countries including France and Kenya, to name a few. He has received awards such as the Artadia Houston Grand Prize and an Idea Fund Award, plus grants from Houston Arts Alliance (HAATX). Hill continues to explore media as wide ranging as traditional materials such as wood and steel to innovative uses of sound to create sculptural environments. He also employs the use of many digital tools. Hill received a BA in political theory, followed by an MFA in sculpture from Stephen F. Austin State University. [jhill@mfa.hou](mailto:jhill@mfa.hou)



**Liv Johnson**  
MFA, Texas Tech University; BA, University of Hawaii at Hilo

Born and raised in Pahoehoe, Hawaii,

Liv Johnson earned her BA at the University of Hawaii at Hilo. In 2015 she moved to Lubbock where she earned her MFA at Texas Tech University in printmaking and sculpture. While her primary emphasis is in printmaking, her work branches into multiple media, developing pieces that explore sound, light, installation, and combine a wide variety of materials. Over the years she has organized and volunteered for numerous community art events and has taught courses and workshops at universities and community studios. She has also published the first scientific illustrations of four new species of *Cyrtandra* in the peer-reviewed journal *PhytoKeys*. Her work has been shown across the country and she has curated a number of exhibitions. She now lives in Houston where she continues to develop her studio work at Burning Bones Press. [ljohnson@mfa.hou](mailto:ljohnson@mfa.hou)



**Bradley Kerl**  
MFA, University of Houston; BFA, University of North Texas  
  
Bradley Kerl is a painter based

in Houston. He received his BFA from the University of North Texas in 2009, and has been an instructor of drawing and painting throughout the Houston area since completing his MFA at the University of Houston in 2014. His work has been shown widely across Texas, including solo presentations at Jonathan Hopson Gallery, the Galveston Arts Center, and Art Palace; and in group exhibitions in Houston, Dallas, and Lubbock. Kerl's work also appears in the recent publications *New American Paintings* No. 138 and *Friend of the Artist: Volume 7*. He is represented in Houston by Jonathan Hopson Gallery. [bkerl@mfa.hou](mailto:bkerl@mfa.hou)



**Arielle Masson**  
MFA, University of Houston; MA, La Sorbonne, France; BA, Lycée Français, Belgium

Arielle Masson joined the Glassell School faculty in 1990 and teaches painting and drawing. She first studied fine art drawing at L'École d'Art d'Uccle Brussels, Belgium. She earned an MA in Latin American literature and did postgraduate studies in linguistics at La Sorbonne. She received an MFAH in fine arts/painting from the University of Houston. She was awarded a residency with the Core Residency Program of the Glassell School and with the Brown Foundation Fellows Program at the Dora Maar House, Ménerbes, France. She has extensively exhibited in museums and galleries throughout Texas, France, and Mexico, including a solo exhibition at the Museum of Anthropology of Xalapa, Veracruz, Mexico. Her studio practice includes all painting media and wall installations, with a specialization in the fabrication and use of egg tempera and gouache paint. She has designed major public

artwork for the City of Houston, including the MetroRail Transit. [amasson@mfah.org](mailto:amasson@mfah.org)



**Patrick M. Palmer**  
Faculty Chair &  
Dean of Students  
MFA, Arizona  
State University;  
BA, University of  
California, Santa  
Barbara

Patrick Palmer has been teaching painting at the Glassell School since 1992 and has been the dean since 2010. He also serves as faculty chair. He earned a BA from the University of California, Santa Barbara in 1977 and an MFA from Arizona State University in 1979. Throughout his 40-plus years of painting, Palmer placed works in the Metropolitan Museum of Art in New York; the San Francisco Museum of Modern Art; the Museum of Fine Arts, Houston; and many other prestigious museum and university collections. Palmer's current paintings revisit an often-examined theme using abstracted figures/heads edged with some psychological intrigue. [ppalmer@mfah.org](mailto:ppalmer@mfah.org)



**Mark Ponder**  
MFA, Southern  
Illinois University;  
BFA, Lamar  
University

Mark Ponder  
joined the

Glassell School faculty in 2014 and teaches digital photography and design. He received a BFA in graphic design from Lamar University in 2005 and an MFA in drawing and painting from Southern Illinois University, Carbondale in 2009. His work has shown at GalleryHOMELAND in Houston, Lawndale Art Center in Houston, Big Medium in Austin, Acadiana Center for the Arts in Lafayette, and BravinLee Programs in New York. He was the recipient of the Louis Comfort Tiffany Grant in 2014. [mponder@mfah.org](mailto:mponder@mfah.org)



**Brian Portman**  
BFA, Rhode  
Island School  
of Design

Brian Portman  
has been an instructor  
at the Glassell

School since 1999, teaching drawing and painting. He has a BFA from Rhode Island School of Design where he was a European Honors Fellow. Other awards and fellowships include the Arch and Anne Kimbrough Fund Award from the Dallas Museum of Art, an NEA grant, and the Core Residency Program of the Glassell School (1983-85). Portman's work is in the collections of the Museum of Fine Arts, Houston; Dallas Museum of Art; Walker Art Center; Museo Culterdad, Mexico City; the Blanton Museum; the Old Jail House Museum; and the El Paso Museum of Art. He has also given seminars for the Museum's education department. He was juror for Art on the Avenue. He has exhibited locally, nationally, and internationally. In 2010, he was featured in Catherine D. Ansporn's book, *Texas Artists Today*. He is represented by Meredith Long & Company, Houston. [bportman@mfah.org](mailto:bportman@mfah.org)



**Robert Ruello**  
MFA, Columbia  
University; BFA,  
School of the  
Art Institute of  
Chicago;  
BA, Loyola  
University

Robert Ruello joined the Glassell School faculty in 2008. He is a visual artist working in both digital and traditional media. Ruello received an MFA from Columbia University in New York City, a BFA from the School of the Art Institute of Chicago, and a BA in psychology from Loyola University in New Orleans. Artist residencies include the Core Residency Program of the Glassell School, the Skowhegan School of Painting and Sculpture, and the Brown Foundation Fellows Program at the Dora Maar House. Honors include a painting fellowship from the National Endowment for the Arts and a Gottlieb Foundation grant,

plus Ruello was a selected artist for the publication *New American Paintings* (Issue 102). Ruello has worked collaboratively on both Transforma Projects with Rick Lowe, Sam Durant, Jessica Cusick, and Jess Garz and Snack Projects with artist/curator Michael Guidry. He is represented in Houston by Inman Gallery. [rruello@mfah.org](mailto:rruello@mfah.org)



**Anna Tahinci**  
PhD, DEA, BA,  
University of Paris  
I, Panthéon-  
Sorbonne

Dr. Anna Tahinci  
joined the

Glassell School faculty in 2013. A native of Greece, she studied history and archaeology in Athens and art history and comparative literature at the Sorbonne (PhD on Rodin's collectors), and did museum studies at the École du Louvre. She has worked at the Musée Rodin, the Musée d'Orsay, the Louvre, and the Harvard Art Museums. She has taught at Boston University, Paris; the University of Minnesota; Macalester College; and the Minneapolis College of Art and Design. She cocurated the sculpture exhibition that was organized in Athens for the Olympic Games in 2004 and the exhibition *Rodin and America* at the Cantor Arts Center, Stanford University in 2011. She teaches a wide range of art history courses from cave to contemporary, and her research interests and publications include French art and women in art. [atahinci@mfah.org](mailto:atahinci@mfah.org)



**Sandra Zilker**  
Department  
Head, Jewelry &  
Associate Dean  
MFA, Cranbrook  
Academy of Art;  
BFA, University of  
Houston

Sandie Zilker joined Glassell in 1974 and is now department head of jewelry/enamel and the associate dean of student activities. She earned a BFA from the University of Houston and an MFA from

Cranbrook Academy of Art. Zilker's wild and colorful work has been exhibited worldwide. Several collections include her work: the Museum of Fine Arts, Houston; the Racine Art Museum; Designmuseo, Finland; and Norden Felske Kundi Industrimuseum, Norway. Her work has been published in numerous books, including *500 Brooches*, *500 Bracelets*, and *500 Plastic and Resin Objects*, as well as *The Art of Enameling* by Linda Darty. She is on the exhibition committee and has served on the board of the Society of North American Goldsmiths. Zilker also serves on the board of Houston Center for Contemporary Craft and is past president of Houston Metal Arts Guild. The Houston Center for Contemporary Craft named her Texas Master Artist in 2014. [szilker@mfah.org](mailto:szilker@mfah.org)



**THE ANNUAL FUND DRIVE SUPPORTS THE GLASSSELL SCHOOL OF ART**

Operational costs for the Glassell School are not covered by tuition alone. The Glassell School relies on generous contributions from students and alumni who contribute to the Glassell School Annual Fund Drive. These important donations provide for the most basic, day-to-day necessities of the school. From providing essential upkeep of the facilities and supporting the faculty and staff to enabling scholarships, affordable tuition rates, and special programs, the Glassell School Annual Fund Drive is critical for the ongoing success of the school.

For more information about the Annual Fund Drives or the Leadership Circle, please contact Haley Horan, senior development officer, annual campaigns, at 713-639-7559, or hhoran@mfah.org.

**We wish to thank and recognize those who made recent contributions to the Glassell School of Art Annual Fund Drive:**

**LEADERSHIP CIRCLE**

**Chairman’s Circle**

The Glassell Family  
 Leslie and Brad Bucher  
 Sue and Rusty Burnett

**Director’s Circle**

Ellen and David Berman  
 Mr. and Mrs. Peter R. Coneway  
 Mr. and Mrs. Jamal H. Daniel  
 Mr. and Mrs. David Marsh  
 John P. McGovern Foundation  
 Ms. Bobbie Nau  
 Mr. and Mrs. John S. Orton  
 The Powell Foundation

**The Gallery**

Ms. Priscilla R. Angly and Mr. Miles Smith  
 Ms. Bettie Cartwright  
 Mrs. Jereann H. Chaney  
 Ms. Sara Paschall Dodd  
 Mr. and Mrs. Michael Gamson  
 Mr. Samuel F. Gorman  
 Ms. Cecily E. Horton  
 Mrs. Cornelia Long  
 Ms. Beth Robertson and Mr. Steve Pearce

**Fellows**

Mr. and Mrs. W. Douglas Ankenman, Jr.  
 Ms. Janet M. Bates and Ms. Elisabeth Bates  
 Mrs. Karen A. Bradshaw  
 The Brown Foundation, Inc.  
 Mrs. Jerry Ann Woodfin-Costa and  
 Mr. Victor Costa  
 Mr. and Mrs. George A. Hawkins  
 Ms. Julia Hayes  
 Mr. and Mrs. William Palmer Hayes  
 Ms. Catherine J. Leachman  
 Mrs. Fred R. Lummis  
 Mr. and Mrs. William K. Matthews III  
 Mr. and Mrs. John T. McCauley  
 Mr. and Mrs. Scott McCool  
 Ms. Clare T. Casademont and  
 Mr. Michael M. Metz  
 Mr. and Mrs. Scott Nyquist  
 Mr. and Mrs. Thomas R. Reckling III  
 Mr. and Mrs. H. John Riley, Jr.  
 Mr. and Mrs. Stephen J. Smith  
 Mr. and Mrs. Russell M. Windham  
 Mr. and Mrs. William A. Wise  
 Mrs. Cyvia G. Wolff



**\$1,000–\$2,499**

Melza and Ted Barr  
 Mr. and Mrs. Jack S. Blanton, Jr.  
 Mr. and Mrs. Laurence C. Burns, Jr.  
 Mr. Charles Butt  
 Dr. and Mrs. William A. Coe  
 Mr. and Mrs. Holcombe Crosswell  
 Mr. and Mrs. Antonio D'Andrea  
 Ms. Julia M. Flowers  
 Mr. and Mrs. Marvin Kaplan  
 Mr. and Mrs. I. H. Kempner III  
 Mr. and Mrs. Stan Lloyd  
 Mr. and Mrs. Rodney H. Margolis  
 Mr. Gary Mercer  
 Ms. Karen J. Minich  
 Mr. and Mrs. Michael Sigman  
 Dr. Ruth Simmons  
 Mr. and Mrs. William A. Smith  
 Mr. and Mrs. William S. Sparks  
 Ms. Ann G. Trammell  
 Mr. and Mrs. Conrad Weil, Jr.  
 Mr. and Mrs. Thomas F. Wessel  
 Mr. and Mrs. Robert B. Westendarp  
 Ms. Bebe Woolley

**\$250–\$999**

Mrs. Elizabeth D. Alcorn  
 Ms. Gloria Alford  
 Mr. and Mrs. Robert B. Bennett  
 Mr. John C. Boehm  
 Mr. and Mrs. Richard Brose  
 Ms. Shoko Kadowaki Bullock  
 Ms. Kathy Cannon  
 Mr. and Mrs. Damien Carey  
 Dr. Angela Chen  
 Mr. and Mrs. Philip C. Chou  
 Ms. Kathy Collins and Mr. Adam Rose  
 Mr. and Mrs. David P. Cotellesse  
 Marie Fay and S. K. Enochides  
 Fisher Investments  
 Mr. and Mrs. Harvey Fitzpatrick  
 Mr. and Mrs. Anthony M. Gatti  
 Ms. Janice Mullin Avery and  
     Dr. Teruhiko Hagiwara  
 Ms. Sharon Willcutts and Mr. Dan Havel  
 Mr. and Mrs. Raymond Holland  
 Ms. Ya-Ling Hsiao

**\$250–\$999 (cont.)**

Mr. and Mrs. Mike Huber  
 Ms. Claudia Huthnace  
 Ms. Annie Wang and Mr. Zerong Jiang  
 Ms. Susan Johnston  
 Mrs. Dell Jones  
 Ms. Donna Keys  
 Ms. Anne Lamkin Kinder  
 Mr. and Mrs. Curtis T. Klement  
 Dr. and Mrs. Ernst L. Leiss  
 Mr. Carl Lockstedt  
 Mr. and Mrs. George H. Martin  
 Dr. V. Reid Sutton and Mr. Joseph B. Nagar  
 Mr. and Mrs. Ed Nasta  
 Dr. and Mrs. Donald W. Owens  
 Ms. Viju Padmanabhan and  
     Mr. Gautham Suresh  
 Mr. and Mrs. Perry J. Radoff  
 Ms. Katherine Rider  
 Ms. Ellen M. Hauge and Mr. John Riola  
 Dr. Paula J. Runté  
 Mr. John-Davis Rutkauskas  
 Ms. Kelly Gaye Simmons  
 Ms. Hilde Stapleton  
 Ms. Cynthia Toles  
 Ms. Ann M. Trickle  
 Mr. and Mrs. James G. Ulmer  
 Mrs. Paul Elliott Van Hook  
 Mr. and Mrs. Robert R. Weir  
 Carly and Michael West  
 Mrs. Deanne T. White  
 Mr. and Mrs. Welcome W. Wilson, Sr.

The above list includes the names of all donors through press time.

MFA **H** *The Museum of Fine Arts, Houston*  
P.O. BOX 6826  
HOUSTON, TX 77265-6826

# THE GLASSELL SCHOOL OF ART STUDIO SCHOOL

5101 MONTROSE BLVD.  
HOUSTON, TX 77006



713-639-7500 • [GLASSELL@MFAH.ORG](mailto:GLASSELL@MFAH.ORG)

Nonprofit Org.  
U.S. Postage  
PAID  
Houston, TX  
Permit No. 214